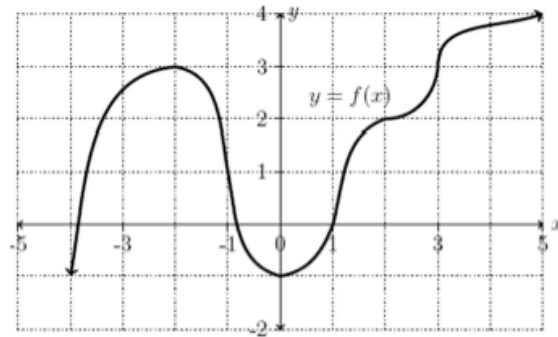


a problem from video (3)

1:08:50

**2. Consider the graph of  $y=f(x)$  given below.**

**(a) Divide the closed interval  $[-2,3]$  into 5 equal subintervals and draw the corresponding rectangles using the right endpoints of each subinterval.**



**(b) Find the Riemann sum for  $y=f(x)$  on the interval  $[-2,3]$  for  $n=5$ , taking the sample points to be right endpoints.**

**(c) Express the integral**

$$\int_{-2}^3 f(x) dx$$

**as a limit of Riemann sums. Do not evaluate the limit.**